

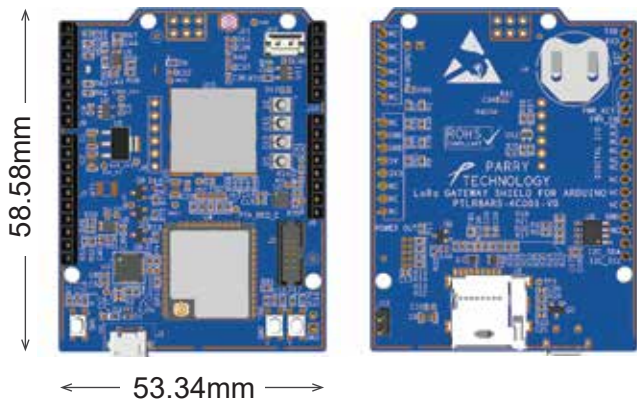
“Single Channel 868MHz to WiFi/BT Gateway” (PTLR8ARS)



is a single channel 868MHz to Wi-Fi/BT Gateway operating at 865~867MHz ISM band frequency (India) with LoRa® modulation. This gateway being a simple one, for LoRa® communication with nodes, supports a single channel transmit/receive, half duplex communication. Gateway is capable of supporting few 10's to maximum of 100 nodes based on the frequency of data communication and the data size per node. Optional “4G LTE GSM Module shield” is available to extend this gateway with 4G LTE connectivity as well.

Features

- I/O can turn ON or Turn OFF, of the power for 4G LTE Arduino GSM Module Shield
- Level translated I/Os for controlling optional SIMCOM A7670 4G-LTE module ON/OFF, Reset
- Over current protection and all external interface signals are protected from ESD



For details write to estore-enquiry@parrytech.net

PARRY
TECHNOLOGY

SINGLE CHANNEL 868MHZ TO WIFI/BT GATEWAY

802.11 b/g/n; 802.11 n (2.4 GHz), up to 150 Mbps

Single Ch LoRa® communication (865~867MHz ISM band frequency for India)

SD Card for data storage. RTCC for time stamping

Matched LoRa® and Wi-Fi antennas for achieving best possible range

Operating voltage of 5V±5% and can be powered by USB

Operating temperature: -40°C to +85°C

Benefits

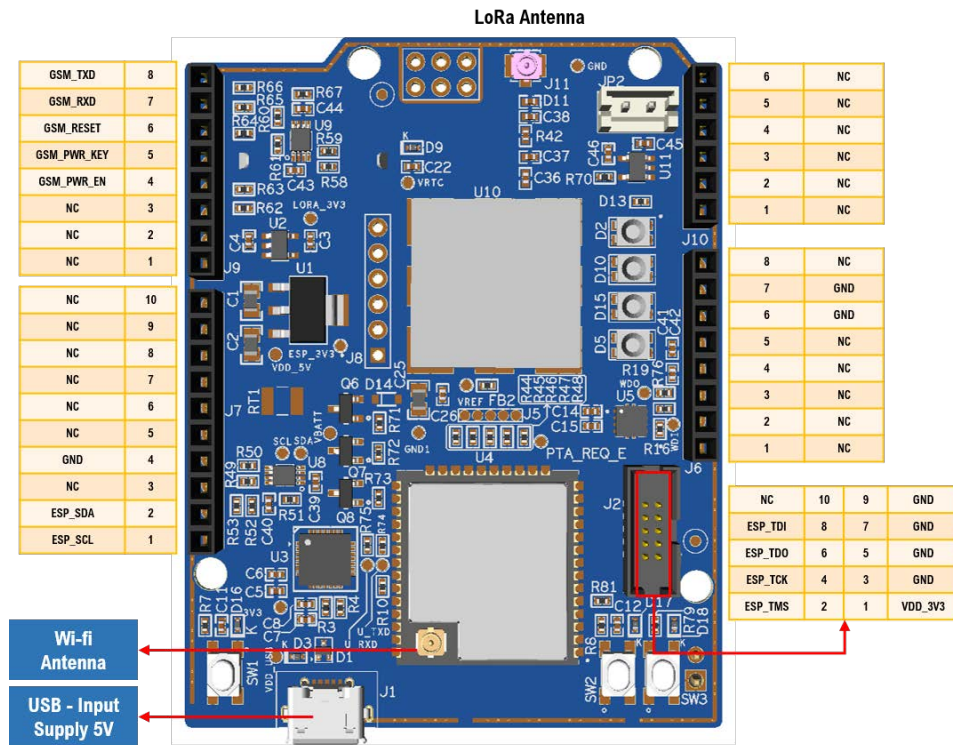
- + Four-layer impedance-controlled PCB for good overall RF performance
- + Components provision for 50-ohm impedance matching of antenna, enabling antenna of customer's choice to be matched

LoRa® is a trademark of Semtech Corporation or its subsidiaries

Parry Technology India Pvt Ltd | No 44B, 2nd Fl. South End Road, Tata Silk Farm, Basavanagudi, Bengaluru, Karnataka 560004

+91 96320 74446 | enquiry@parrytech.net | www.parrytech.net | [f](https://www.facebook.com/parrytechiot)parrytechiot | [in](https://www.linkedin.com/company/parry-technology-iot)parry-technology-iot

Pinout Diagram



Product Ordering Guide

Ordering Part number : **PTLR8ARS-AC001V0**

Purchase Notes

LoRa® antenna, Wi-Fi antenna, antenna cable, battery and USB power cable needs to be bought separately.

For applications where external antenna is needed, antenna impedance matching services with casing can be availed at additional charges.

About Parry Technology

Engineering/System integration services:

Our engineering services ranges from early engagement with customers to understand the system needs, convert the needs into requirements, finalize on the right technology implementation, circuit design, simulations, PCB development & testing, characterization, final qualifications, documentations at all stages and assistance on the product manufacturing and deployment.

Total Solutions:

Products, platforms, and cloud solutions for end-to-end IoT deployments.

Estore:

Ready to use subsystem modules/products for you to quickly test, develop Internet of Things (IoT) applications.

